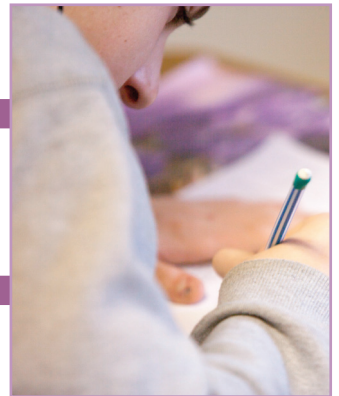


Lawrence County
Developmental Disabilities



ANNUAL REPORT 2 0 2 0



Providing Lawrence County Residents With a
Lifetime of Services for Over 50 Years

Early Intervention • School Age Services • Service and Support Administration

www.lawrencedd.org

 @LawrenceCountyDD

740-532-7401



Superintendent Message

Julie Monroe, LCDD Superintendent

Thank you for reading the Lawrence County DD's 2020 Annual Report. Like all other agencies across the state, we were deeply impacted by the COVID-19 pandemic. Our offices and school shut down and services drastically changed. However, we were able to continue services and supports to individuals with developmental disabilities through partnerships with service providers, support from the Ohio Department of Developmental Disabilities (DD), and the flexibility and dedication of our staff.

In light of all of the challenges, our local DD community not only met the challenges imposed by the pandemic, but also continued to move ahead in providing quality services to individuals with DD in Lawrence County. We hope you enjoy reading our report, and thank you for supporting the Lawrence County DD.

Lawrence County DD By The Numbers

85

Children age 0-3
enrolled in Early
Intervention

321

People receiving supports
to live, work or participate
in the community through
Service & Support
Administration

56

Students
enrolled in Open
Door School

Lawrence County Developmental Disabilities Board of Directors



Debra Jones
President



Lou Pyles
Vice President



Steve Thompson
Recording Secretary



Mike Gore



Brandan Smith



Sara Marks



Tanner Huff

Thanks to your support, we are able to provide needed services to children and adults with developmental disabilities in Lawrence County. With your help, we can strive to see that all of those in the community achieve a life full of abilities.

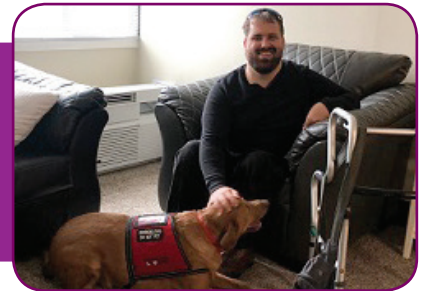


Alex Beckett, Student

Alex continued job-building and independent living skills during his final year at ODS. He worked the cash register, stocked shelves, and made coffee at the coffee cart.

Tanner Huff, Waiver Service Recipient

Tanner was hired as a Tech Ambassador with SOCOG. Tanner also was able to receive a service dog, Carson, through his waiver.



Mason Belcher, EI Recipient

Mason, now 2, has been in the EI program since 6 months old. After strategies shared with his family, Mason has overcome motor delays and is now walking and climbing.



Hats off to our individual providers and provider agencies who continued providing services in an ever changing year!

Service providers continued to provide direct services to individuals in their homes and community while managing the implications of the pandemic. Many faced shortages in needed supplies and had to manage staff absences due to illness. Despite the many challenges, our service provider community demonstrated their commitment to quality services for people with developmental disabilities in Lawrence County.

Lawrence County DD's Mission

To promote advocacy, inclusion and personal growth

Lawrence County DD's Vision

To see people of all ages feel included in our community

Lawrence County DD's Core Values

Communication • Accountability • Safety • Integrity • Compassion

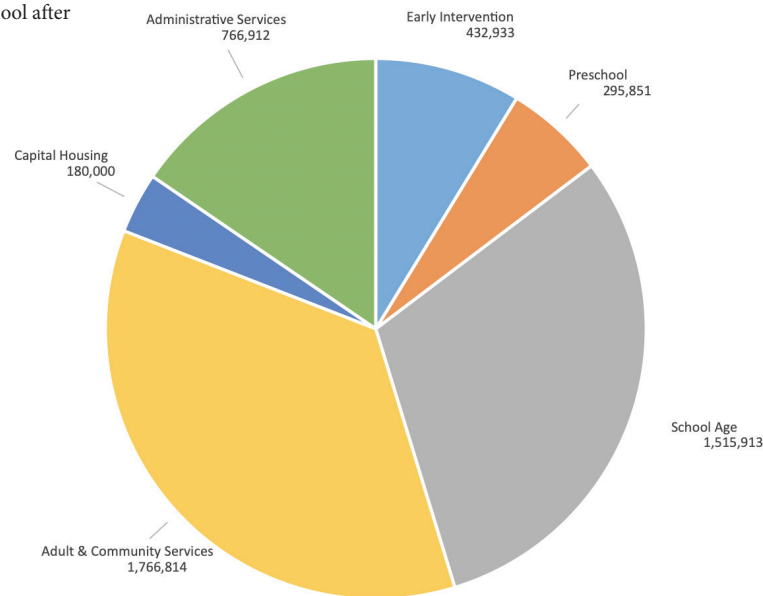
Lawrence County DD 2020 Financials

Prepared by Amy Brand, LCDD Business Manager

EXPENSES

Early Intervention.....	\$432,933	Capital Housing.....	\$180,000
Preschool*.....	\$295,851	Administrative Services.....	\$766,912
School Age.....	\$1,515,913		
Adult & Community Services.....	\$1,766,814	Total.....	\$4,958,422

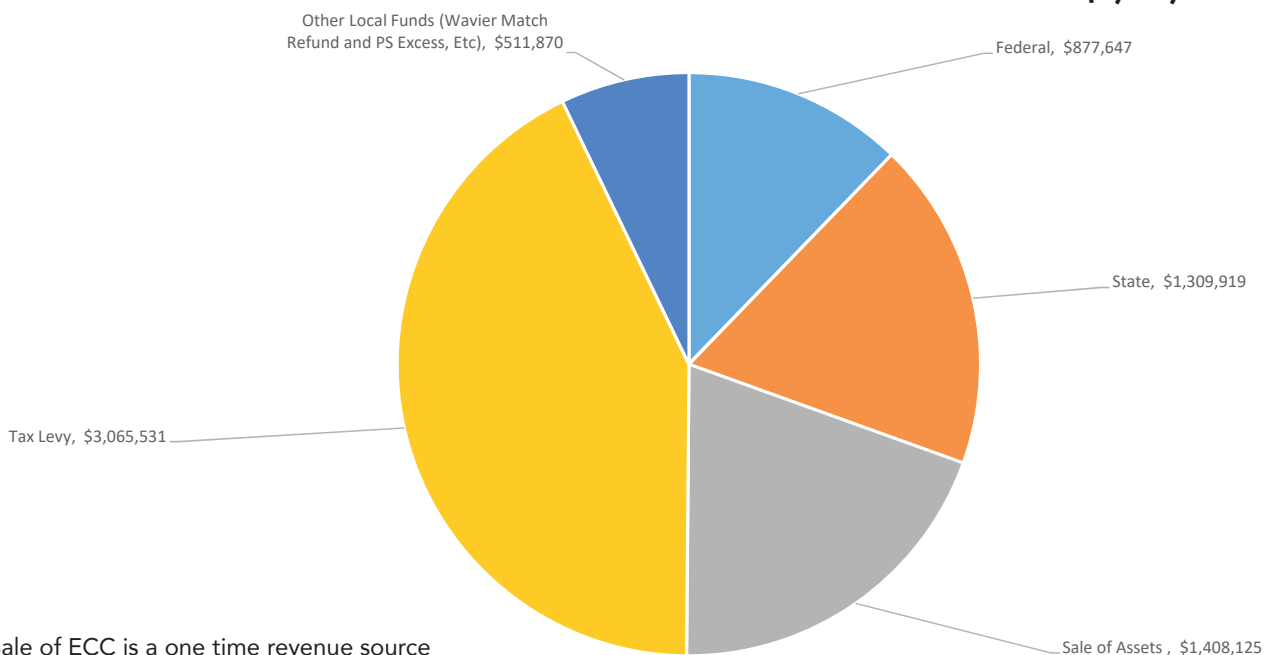
*LCDD No longer operates preschool after the 2019/2020 school year.



REVENUE

General Fund & Family Support Services

Federal.....	\$877,647 (12%)	Tax Levy.....	\$3,065,531 (43%)
State.....	\$1,309,919 (18%)	Other Local Funds.....	\$511,870 (7%)
Sale of Assets (ECC)*.....	\$1,408,125 (20%)		
		Total.....	\$7,173,092



*Sale of ECC is a one time revenue source